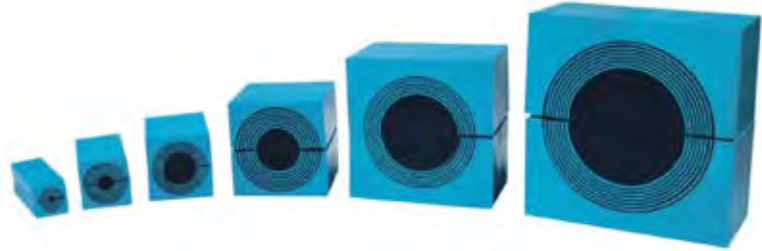


Product Index



Multidiameter™

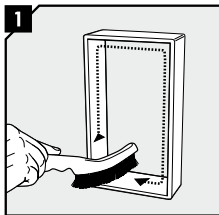


Six module sizes

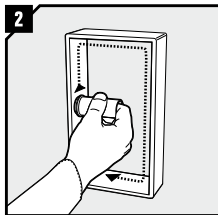
Our adaptable technology Multidiameter™, based on sealing modules with removable layers, makes installation easy and safe. The modules consist of two halves and a center core. You can seal cables or pipes of several different

sizes simply by peeling off layers from the module halves, until a perfect fit is achieved. If not removed the center core turns the module into a spare capacity unit.

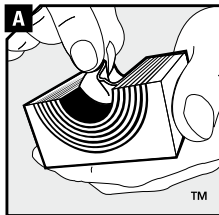
How it works



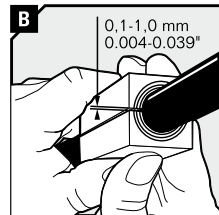
1 Remove any dirt inside the frame.



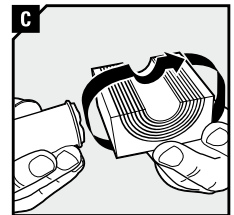
2 Lubricate the inside surfaces of the frame with Roxtec Lubricant, especially into the corners.



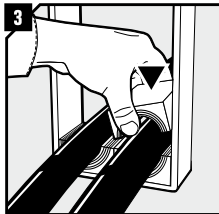
A Adapt the modules to fit cables or pipes by peeling layers until you reach the gap seen in pic. B.



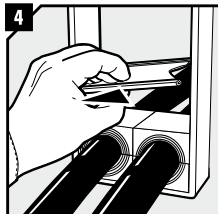
B Achieve a 0.1-1.0 mm gap between the two halves when held against the cable/pipe.
0.1-1.0 mm
0.004-0.039"



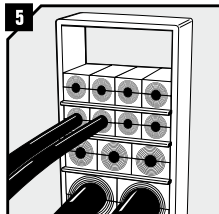
C Lubricate all modules for the frame thoroughly, both the inside and the outside surfaces.



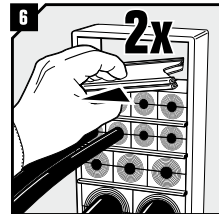
3 Insert the modules according to your installation plan (transit plan). Usually start with the largest modules.



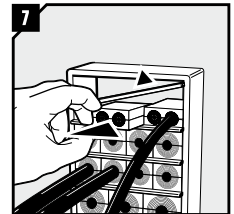
4 Insert a stayplate on top of the finished row of modules.



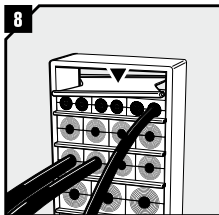
5 Continue to fill up the packing space of the frame, until one final row is left.



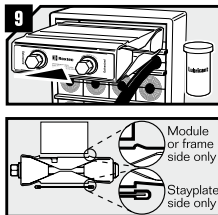
6 Before inserting the final row of modules, insert two stayplates.



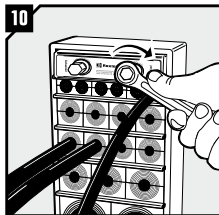
7 Separate the two stayplates and insert the final row of modules between the stayplates.



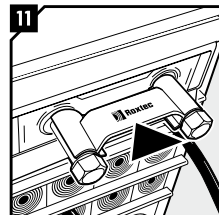
8 Drop the upper stayplate on top of the modules.



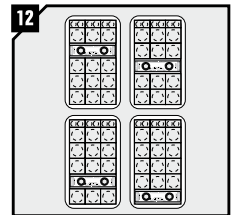
9 Lubricate all sides of the wedge sparsely, except front and back. Please read the markings on the wedge and turn it correctly before inserting it in the top of the frame (standard position). Face with "Stayplate this side" must always face a stayplate.



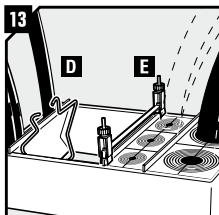
10 Tighten the screws until full stop, approx 20 Nm (15 ft.lb.).



11 Attach the Wedge Clip to the wedge bolts to check that the wedge has been properly tightened.

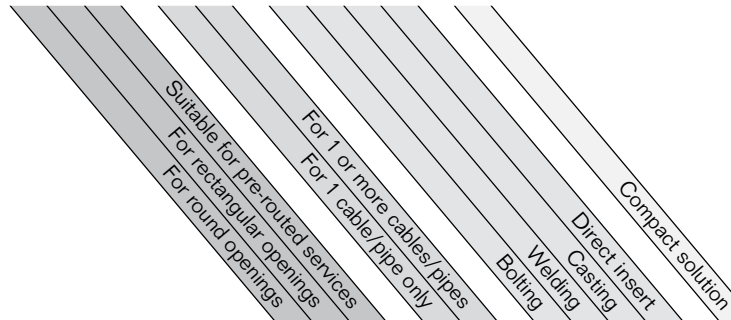


12 Optional wedge positions (anywhere within the frame).



13 Stayplate Clips (D) and Stayplate Clamps (E) can be used to simplify horizontal assembly.

We Seal Your World



Product range

This index contains our standard range of products. If you need help finding a solution that fits into your design or structure, please do not hesitate to contact your local Roxtec supplier or e-mail info@se.roxtec.com for guidance. The list of Roxtec's local representatives is available at www.roxtec.com

For more product information, see the Roxtec Product Catalogue



	Suitable for pre-routed services	For rectangular openings	For round openings	For 1 or more cables/pipes	For 1 cable/pipe only	Bolting	Welding	Direct insert	Casting	Compact solution	
Rectangular frames											
	■			■				■			S frame
	■			■				■			SRC frame
	■			■				■			SK frame
	■			■				■			SBTB frame
	■			■				■			SF frame
	■			■				■			GHM frame
	■	■		■				■		■	B frame
	■			■				■	■		G frame
	■			■				■			Swan Neck
	■	■		■				■			KFO frame
	■	■		■				■			ComPlus frame
	■			■				■		■	CF 8 frame
	■			■				■		■	CF 32 frame
	■			■				■			CF 10 frame
	■			■				■			CF 16 frame
	■			■				■			CF 24 frame
	■			■				■			C KFO frame
	■			■				■			ComLite frame
Round frames/seals											
■		■		■				■	■		R frame
■		■		■				■	■		RS seal
■		■		■				■	■		RS OMD seal
■		■		■				■	■		RS PPS back-to-back seal
■		■		■				■	■		RS PPS/S single-side seal
■		■		■				■			R X seal
■		■		■				■			RS X seal
■		■		■				■		■	C RS T seal
■		■		■				■		■	RG M63 seal
■		■		■				■		■	CRL seal

DISCLAIMER

"THE ROXTEC CABLE ENTRY SEALING SYSTEM ("THE ROXTEC SYSTEM") IS A MODULAR BASED SYSTEM OF SEALING PRODUCTS CONSISTING OF DIFFERENT COMPONENTS. EACH AND EVERY ONE OF THE COMPONENTS ARE NECESSARY FOR THE BEST PERFORMANCE OF THE ROXTEC SYSTEM. THE ROXTEC SYSTEM HAS BEEN CERTIFIED TO RESIST A NUMBER OF DIFFERENT HAZARDS. ANY SUCH CERTIFICATION, AND THE ABILITY OF THE ROXTEC SYSTEM TO RESIST SUCH HAZARDS, IS DEPENDENT ON ALL COMPONENTS THAT ARE INSTALLED AS A PART OF THE ROXTEC SYSTEM. THUS, THE CERTIFICATION IS NOT VALID AND DOES NOT APPLY UNLESS ALL COMPONENTS INSTALLED AS PART OF THE ROXTEC SYSTEM ARE MANUFACTURED BY OR UNDER LICENSE FROM ROXTEC ("AUTHORIZED MANUFACTURER"). ROXTEC GIVES NO PERFORMANCE GUARANTEE WITH RESPECT TO THE ROXTEC SYSTEM, UNLESS (I) ALL COMPONENTS INSTALLED AS PART OF THE ROXTEC SYSTEM IS MANUFACTURED BY AN AUTHORIZED

MANUFACTURER AND (II) THE PURCHASER IS IN COMPLIANCE WITH (A), AND (B), BELOW.

(A) DURING STORAGE, THE ROXTEC SYSTEM OR PART THEREOF, SHALL BE KEPT INDOORS IN ITS ORIGINAL PACKAGING AT A TEMPERATURE NOT EXCEEDING +70°C/158°F AND NOT BELOW -40°C/-40°F.

(B) INSTALLATION SHALL BE CARRIED OUT IN ACCORDANCE WITH ROXTEC ASSEMBLY INSTRUCTION IN EFFECT FROM TIME TO TIME.

THE PRODUCT INFORMATION PROVIDED BY ROXTEC DOES NOT RELEASE THE PURCHASER OF THE ROXTEC SYSTEM, OR PART THEREOF, FROM THE OBLIGATION TO INDEPENDENTLY DETERMINE THE SUITABILITY OF THE PRODUCTS FOR THE INTENDED PROCESS, INSTALLATION AND/OR USE.

ROXTEC GIVES NO GUARANTEE FOR THE ROXTEC

SYSTEM OR ANY PART THEREOF AND ASSUMES NO LIABILITY FOR ANY LOSS OR DAMAGE WHATSOEVER, WHETHER DIRECT, INDIRECT, CONSEQUENTIAL, LOSS OF PROFIT OR OTHERWISE, OCCURRED OR CAUSED BY THE ROXTEC SYSTEM OR INSTALLATIONS CONTAINING COMPONENTS NOT MANUFACTURED BY AN AUTHORIZED MANUFACTURER.

ROXTEC EXPRESSLY EXCLUDES ANY IMPLIED WARRANTIES OF MERCHANTABILITY AND FITNESS FOR A PARTICULAR PURPOSE AND ALL OTHER EXPRESS OR IMPLIED REPRESENTATIONS AND WARRANTIES PROVIDED BY STATUTE OR COMMON LAW. USER DETERMINES SUITABILITY OF THE ROXTEC SYSTEM FOR INTENDED USE AND ASSUMES ALL RISK AND LIABILITY IN CONNECTION THEREWITH. IN NO EVENT SHALL ROXTEC BE LIABLE FOR CONSEQUENTIAL, PUNITIVE, SPECIAL, EXEMPLARY OR INCIDENTAL DAMAGES."

Roxtec sealing system

Modules



RM module



RM module kit



Waveguide core



CM module

Rectangular frames



S frame



SRC frame



SK frame



SBTB frame



SF frame



GHM frame



B frame



G frame



Swan Neck frame



KFO frame



ComPlus frame



CF 8 frame



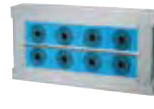
CF 32 frame



CF 10 frame



CF 16 frame



CF 24 frame



C KFO frame



ComLite kit

Round frames/seals



R frame



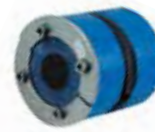
RS seal



RS OMD seal



RS PPS seal
back-to-back seal



RS PPS/S
single-side seal



R X kit



RS X kit



C RS T seal



RG M63 kit



CRL seal

Assembly parts



Wedge kit



Wedge



Stayplate



C Wedge kit



C Wedge



C Stayplate



Lubricant



Assembly Gel

Accessories



GE extension frame



SE PPS extension frame



Entry plate



Sleeve



Casting mould



Casting mould



DD Plate



Sealing strips



Pre-compression wedge



Pre-compression tool



Pre-compression eccentric tool



Handgrip pre-comp



Top packing puller



Top packing puller adapter



Stayplate clamps



Stayplate clips



RG M63 tools



Slide Caliper



RTM Software



CAD Library

Roxtec EMC sealing system

EMC Modules



RM ES module



RM ES B module



RM PE module



RM PE B module



CM ES module



CM PE module

EMC Rectangular frames



S frame
stainless steel



SF frame
stainless steel



B frame
stainless steel



G frame
galvanised,
stainless steel



CF 8 frame EMC



CF 32 frame EMC



C Compression unit ES



C Compression unit
IP/PE



CF 16 frame EMC

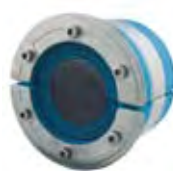
EMC Round frames/seals



R frame EMC



RS ES seal



RS PE seal

Assembly parts



Wedge kit
galvanised,
stainless steel



Wedge
galvanised,
stainless steel



Stayplate
galvanised,
stainless steel



Wedge cover ES



EMC marking tool



Lubricant



Assembly
Gel

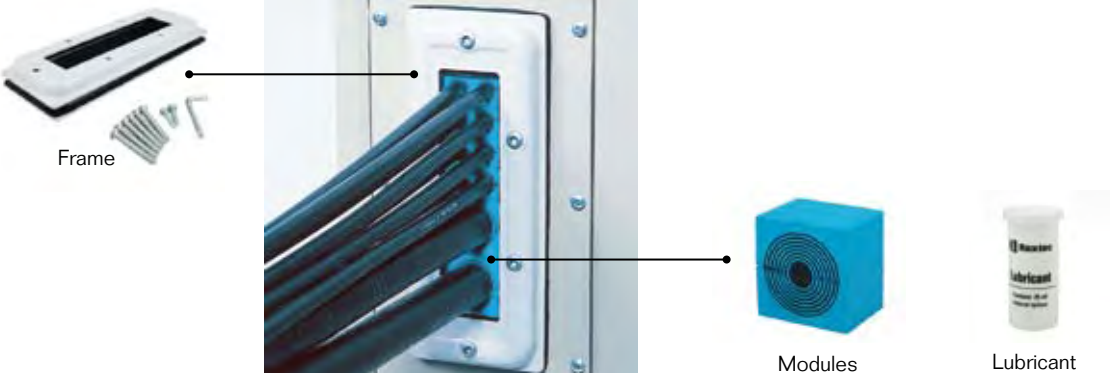
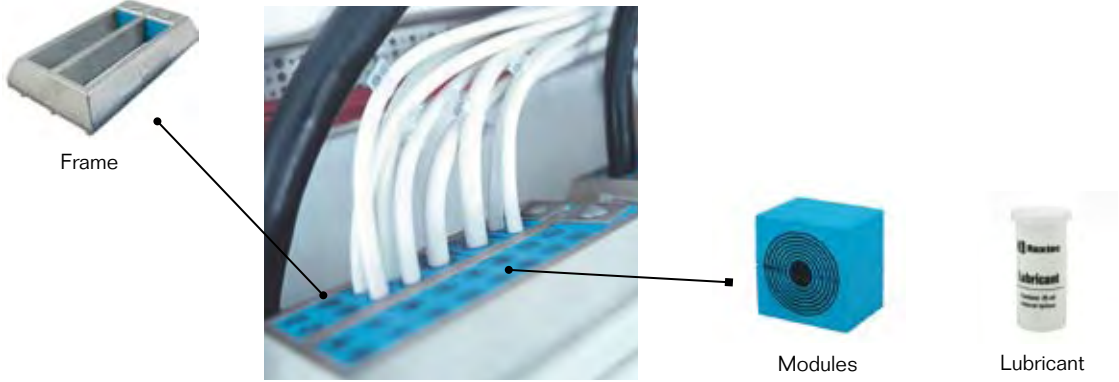
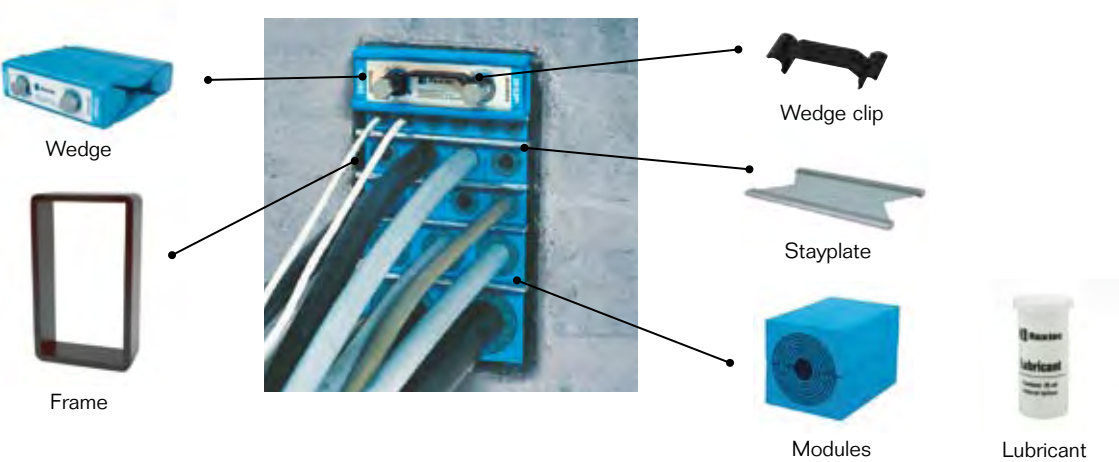
Roxtec Ex sealing system

For product range please contact your local Roxtec supplier or email: info@se.roxtec.com



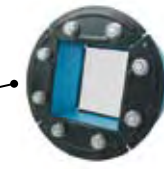
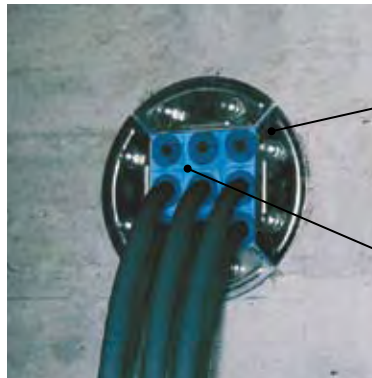
Type of solutions

Rectangular solutions, frame and components



Type of solutions

Round solutions, frame and components



Frame

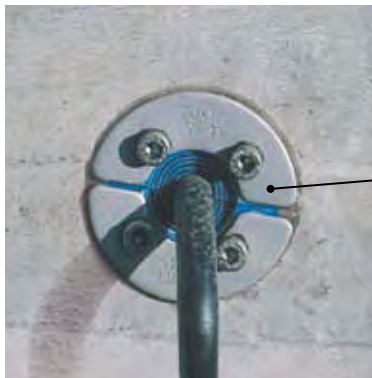


Modules



Lubricant

Round solutions for single cable or pipe, complete unit



Seal



Lubricant

Kit solutions

Thanks to Multidiameter™, the Roxtec technology based on sealing modules with removable layers, we can always supply you with a kit solution. A kit contains all necessary components to create a complete seal. Any frame or seal in our product range can be delivered as a tailored kit. To simplify your work, a selection of our products is only available in kits – complete sealing solutions!



Kit including all components

All rights reserved

We reserve the right to make changes to the product and technical information without further notice. Any errors in print or entry are no claims for indemnity. The content of this publication is the property of Roxtec International AB and is protected by copyright.



Roxtec International AB
Box 540, SE-371 23 Karlskrona, SWEDEN
PHONE +46 455 36 67 00, FAX +46 455 820 12
EMAIL info@se.roxtec.com, www.roxtec.com